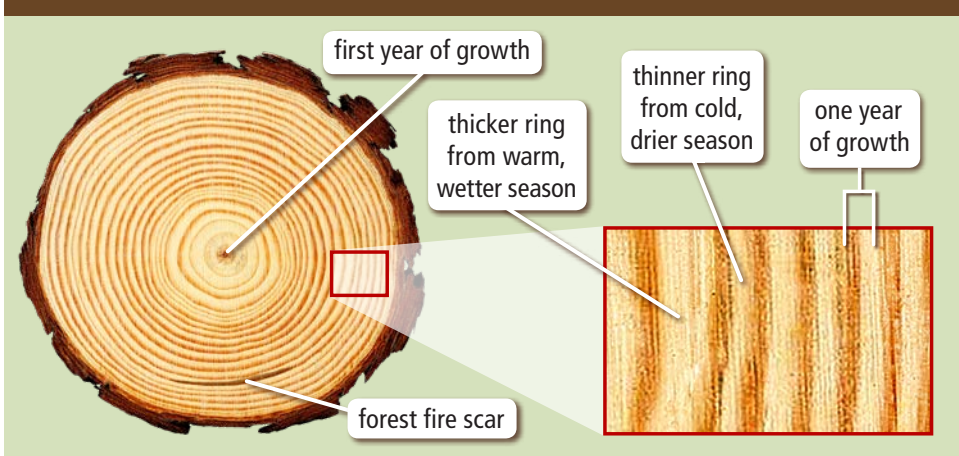


TREE RINGS



Do you know that counting the rings inside a tree tells you its age? Each year, a new circle of wood grows around the trunk of a tree. One light ring and one dark ring equal one year. Light rings grow during spring and early summer. Dark rings grow during late summer and fall.

How to Read Tree Rings



Tree rings do not just tell how old a tree is. They also give information about what the climate was like during the life of a tree. Tree rings tell how much rain fell and what the temperature was like while a tree was growing. Rings grow wider when it is warm or rainy. Thin rings grow when it is cold or dry.

Trees can live for hundreds of years. Some trees have even lived for thousands of years. In some cases, trees are the only way to learn about the climate long ago. Tree rings are an amazing part of nature.

This tree in California is almost five thousand years old.

