

# Lesson 2



SAY

## Lesson message:

Hello Students! Today we are going to continue to explore responsible decision-making. Let's remember that responsible decision-making is making caring choices about your behavior and **interactions**. This happens when students listen, share, and work together. Let's try to find more examples in our **interactions** with one another today. We can all do it! We are going to have a great day!

## Daily message



DO

Before beginning, write the Daily Message on chart paper or the board. Invite students to join the circle and sing the welcome song while gathering.



SAY

Welcome, welcome, welcome to you. We are beginning. We are so happy to see you!



DO

Read aloud the daily message text to students. As you read aloud, think aloud pointing to words and describing meaning. Show students uppercase letters at the beginning of each sentence and lowercase letters throughout the message.

## Academic vocabulary



SAY

I am going to read our Daily Message again. When I am reading the Daily Message aloud, I want you to think of any words you hear that you do not know.



DO

Read the Daily Message straight through, this time demonstrating automaticity, appropriate intonation, and expression.



SAY

Think about the words that you noticed that you did not already know.



DO

Ask students to share the words they noticed with a partner and what they might mean. Listen in to their discussions to see if they chose the same word you planned to highlight today.



SAY

Let's explore the unknown words together. What vocabulary words do you notice?



DO

Allow students to share the vocabulary words that are new to them.

# Lesson 2



These are all awesome words to explore! Today, we are going to zoom in on the word **interactions**. The word interactions refers to talking and doing things with other people. We have many interactions every day. Think about the responsible decisions you have to make with your interactions.

## Share time



We are going to discuss how we show responsible decision-making in our own lives.



Share one time you have shown responsible decision-making in your own life as a model for students. For example, share a time when you had to make a decision in an interaction that is appropriate for a first grader like a friend wanted you to breaking a rule (using markers that were off-limits, running on the pool deck, etc.).



Think of an example when you made a responsible decision. Be ready to share with a partner. Turn to the person next to you and share your thinking.



Give students time to share with a partner.

# Lesson 2



Can anyone relate their responsible decision-making back to our vocabulary word, interactions? How can your responsible decision-making help you in your interactions?



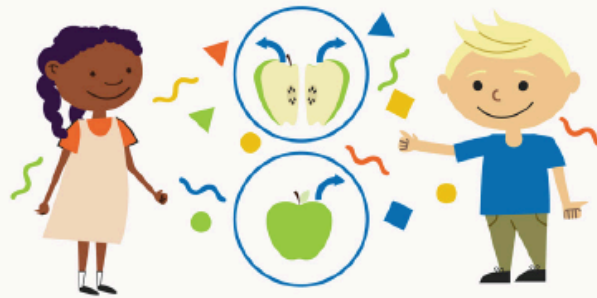
Listen as students share to assess student understanding of SEL: Responsible Decision- Making focus and ability to describe things with relevant details and using complete sentences. At the end of the time period, thank the students for sharing and remind them to practice responsible decision-making.



Thank you for sharing your wonderful thoughts today. We did it! Remember to practice your responsible decision-making!

SEL focus card

## Responsible Decision-Making



I can make caring choices about my behavior in different situations.

springboard